

WESTON BAY YACHT CLUB

**INCORPORATING
UPHILL SAILING CLUB**



Sailing Programme - 2017



WESTON BAY YACHT CLUB

Website: www.wbyc.co.uk E-mail: info@wbyc.co.uk Tel: 01934 257071

President	Bob Godbold	01934 621784
Commodore	Jeff Parker	01934 820731
Vice Commodore	Jeff Adams	07968 741454
Rear Commodore	Ed Williams	07977 926334
Bosun	Ray Munden	01934 419116
Sailing Officer	Vacant	01934 742616
Moorings Master	Terry Millier	07710 680889

Please contact the Moorings Master if you notice a problem with any boat on the moorings.
For reporting incidents on the Beach (North Somerset Council) 01934 622669

Other Yacht Club Numbers

Barry YC	01446 735511	Cardiff YC	02920 463697
Cardiff Bay YC	02920 226575	Newport SC	01633 271417

Useful Information

Milford Haven Coastguard 01646 690909 MMSI 002320017
Swansea Coastguard is closed. Milford Haven now covers the whole area.

Nells Point NCI, (Barry Island), Coastwatch 01446 420746
Worms Head NCI, Coastwatch 01792 390167

BBC Radio 4 shipping weather forecasts:

00:48, 05:20 (LW & FM) followed by Inshore Waters, 12:01 (LW only), 17:54 (LW only Mon to Fri, LW & FM Sat & Sun)

Coastguard Safety Information Broadcasts

Milford Haven Coastguard:

1. Full Safety Information including - Inshore Waters Forecast - Outlook - Gale Warnings - Shipping Forecast - Navigation Warnings
2. New Inshore Waters Forecast plus previous Outlook and Gale Warnings.
3. Repetition as per 2 plus new Strong Wind Warnings

Broadcast Times:

01:50₍₂₎, 04:50₍₃₎, 07:50₍₁₎, 10:50₍₃₎, 13:50₍₂₎, 16:50₍₃₎, 19:50₍₁₎, 22:50₍₃₎

The initial call will be on Ch 16 followed by a broadcast on either Ch 23 or Ch 86 depending on your location.

From September 2017, the services will use VHF 62, 63 and 64.

The use of VHF Channel 10 for MSI and pollution control (back up) is unchanged.

On the cover this year is a random picture by Jeff Adams.



Abridged Racing Instructions – See Website for Complete Set

1 Applicable ISAF and RYA Sailing Rules

Races will be sailed under ISAF Racing Rules of Sailing (RRS) and RYA Prescriptions with the exceptions given below:

- (a) RRS 29.1. The signals for Individual Recalls do not apply
- (b) Under RRS Part 2 Preamble, RRS 48 and RRS J 2.2(3), the International Rules for Preventing Collisions at Sea will prevail instead of RRS Part 2 between the hours of Sunset and Sunrise.

2 Decision to Race

The responsibility for a boats decision to participate in a race or to continue racing is hers alone.

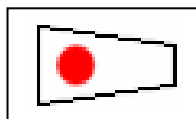
ISAF Part 1 Rule 4

3 Course Notification

- 3.1 The course to be sailed will be signalled on boards displayed on the front of the Clubhouse, each course being represented by letters and/or numbers as detailed in **Racing Instruction 8**. Where **Class 1 and Class 2** courses differ, the appropriate Number Pennant will be displayed to identify the difference. It is the responsibility of skippers to note this information when leaving the river.

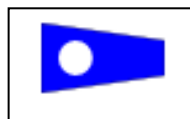
Red Circle on White

No. 1 - Class 1



White Circle on Blue

No. 2 - Class 2



- 3.2 Any changes of course will be notified by the OOD.

4 Radio Use for Starting – Finishing and Retirements

- 4.2 A listening watch must be kept on Channel 37 (M1) from 20 minutes before the published start time until the boat concerned has either retired or finished the race. The precise protocol for starting is given in **Racing Instruction 6**.
- 4.3 **RETIRING** boats shall notify their retirement to the OOD by radio, and where possible avoid calling at times when other boats are about to finish.
- 4.4 A boat **FINISHING** will call the OOD approximately 3 minutes before it expects to finish and make the following call:

Race control - this is *boat name* approaching the line - over.

The OOD will respond as follows:

***Boat name* - this is race control - standing by.**

- 4.5 In cases where two or more boats are approaching the line in quick succession, the protocol will be for boats to call in, in order of approach, so that the leading boat's call is not blocked.
- 4.6 On crossing the line each competing boat will call the OOD and announce its finish with the following call:

Race control - this is *boat name* crossing the line - now - over.

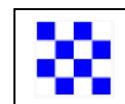
The OOD will respond as follows:

***Boat name* - this is race control - time taken - out.**

- 4.7 All finishing boats will record their own "GPS" finishing time at (or soon after) crossing the finishing line transit, and be prepared to confirm that time to the OOD.
 - 4.8 Boats that have finished should avoid requesting further finishing information.
- ### 5 Starting
- 5.1 The normal "Start Gate" for Single Tide races is marked by pair of buoys, the seaward of these being "Buoy X" (as shown on the inset Chartlet provided on page 5). The "Start Line" will be a transit of the landward buoy shown as Y on the same Chartlet) and the central pyramid of the roof of the Sealife Centre. These marks also define the normal Finish Line. In cases where Buoy X is off station and not in transit, with the inner mark and the Sea Life Centre, starting boats, must not pass abeam of Buoy X before the start is signalled.
 - 5.2 If the OOD deems that the buoy X is too far off station and unfair advantaged may be gained by a boat or boats, he / she will start the race in such a direction that the line will need to be passed before that buoy.
 - 5.3 At the OOD's discretion, due to other events in the Bay or prevailing conditions, the Start for A, B and Bay series races, may be at Safe water Juicy Buoy (B). In such cases the "Gate" is between the Buoy and Brean Down. The **Start Line** will be **Juicy Buoy**, in transit with the **outer end of Birnbeck Island**.



- 5.5 Boats waiting *or proceeding (late)* to the start must keep clear of boats which have started.
- 5.6 The start of any 2 tide race may be given a two hour start gate as long as it is published. (Do we need to say about taking times in this start mode.)
- 6 Race Signals (Announcements) and Pre-Start Timing**
- 6.1 All announcements will be made by the OOD by radio from a Committee Boat, which may itself be a competitor, on VHF CH37 (M1). **Timing will be by GPS time.**
- 6.2 Any postponement of the start (normally of 15 minutes duration) will be announced by radio, 10 minutes before the published start time.
- 6.3 There will be an announcement and count-down to the 10 minute warning:
- Weston Bay boats - stand by for your 10 minute warning (a short pause)**
10 5-4-3-2-1-0.
- The 10 minute warning announcement will be made either on the hour, or at intervals of 5 minutes after the hour.
- 6.4 There will be an announcement and count-down to the 5 minute warning:
- Weston Bay boats - stand by for your 5 minute warning (a short pause)**
10 5-4-3-2-1-0.
- 6.5 There will be an announcement and count-down of to the Start:
- Weston Bay boats stand by to start (a short pause)**
10 5-4-3-2-1- start!
- 6.6 A recall of boats on the Course side of the line at the time when the starting announcement is made will be by radio. Boats on the Course side at that time must return to the pre-start side of the line, by sailing around either end of the line (RRS 30.1). If a skipper knows that he/she has crossed the line prematurely, but does not receive a call from the Committee Boat, he/she should act as if he/she had received that call. Boats that do not comply will be penalised and given a given a severe time penalty, one minute longer (corrected) than the slowest boat in the class.
- 6.7 A **General Recall** will be indicated by radio and subsequently initiate a new 5 minute count down as detailed above.
- 6.8 **Shortening** of the course will be signalled by radio.
- 6.9 A race **cancelled or abandoned** on the day of the event will be signalled by displaying code flag 'N' (with no other signal) on the Beach Clubhouse, from 45 minutes before the advertised start time until the start time. If the cancellation occurs later than 20 minutes before the start time, flag 'N' may (or may not) be displayed, however the cancellation will be notified by radio at approximately 5 minute intervals until 10 minutes after the published start time. If for unforeseen reasons a race is cancelled or abandoned before the day of the event, an email message to that effect will be sent to all members who have submitted their email address to the Sailing Secretary.
- A copy of the cancellation notice will be posted, on the Beach Clubhouse and on the Sailing Committee notice board within the Clubhouse.
- 7 Finishing and Alternative Finishes**
- 7.1 The normal Finish Line for "B" and Bay series races is defined by a transit of the landward buoy Y and the central pyramid of the roof of the Sealife Centre. All boats finishing must pass through the gate between buoy X and the landward buoy Y as indicated by the course boards or the alternative finish announced by the OOD.
- 7.2 With the exception of when severe weather conditions prevail, the finish of a shortened race, would not normally take place until an hour after high water has elapsed.
- 7.3 The Officer of the day will endeavour to ensure, that where ever possible there is a result, and therefore may shorten course to take account of current conditions. In races run in the confines of Weston Bay, a minimum of three marks (including the start) must be passed for the result to count in any series. Where a shortened course is announced, alternative finish points as specified in the table below are to be used. Course changes will be announced by the OOD.
- 7.4 The planned finish for Frostbite (winter) series races will be at Juicy Buoy (B). Due to other events in the Bay, 'B' and Bay series races may also use the same planned finish. In those cases the finish is as detailed in the table below.
- 7.5 In accordance with 7.3, the following, alternative finishes for races may be announced by the OOD. All boats finishing when an alternative finish has been announced, must pass through the appropriate gate as specified in the table below.





Alternative Finishes for One Tide Races

MARK / BUOY	GATE	FINISH LINE TRANSIT
A Uphill Boats	Buoy 'A' and the shore (Beware of shallow water)	'A' and the outer end of Brean Down.
B (Juicy) Safe Water Mark	Juicy (B) & Brean Down	Juicy Buoy and the outer end of Birnbeck Island.
C Churchill	Churchill Buoy (C)	Churchill Buoy and the Central Pyramid of the Sealife Centre.
D Milton	Milton Buoy (D) & Birnbeck	Milton Buoy and the outer end of Birnbeck Island.
E Dauncey	Dauncey Buoy 'E' & Marine Lake	'E' and the centre of Black Rock.

7.7 Two tide races will finish at the Churchill Buoy (C). The finish line is a transit between that buoy and the Central Pyramid of the Sealife Centre. The Churchill Buoy is to be left to port.

8 Course Details

8.1 One Tide Courses

The course will be set by the OOD taking due account of sea and weather conditions. Courses for races in the bay may make use of seven race mark buoys identified as X, A, B, W, C, D & E.

- Where **Class 1 and Class 2** have different courses or number of laps, this will be indicated by the relevant Class Number Pennant, as detailed in **Racing Instruction 3**.
- Course identification and instructions for races held in the confines of Weston Bay will be given by a series of red and green (port and starboard) boards carrying the appropriate buoy identification letter, together with a number board for the number of laps. These boards will be displayed on the Clubhouse.

Example:

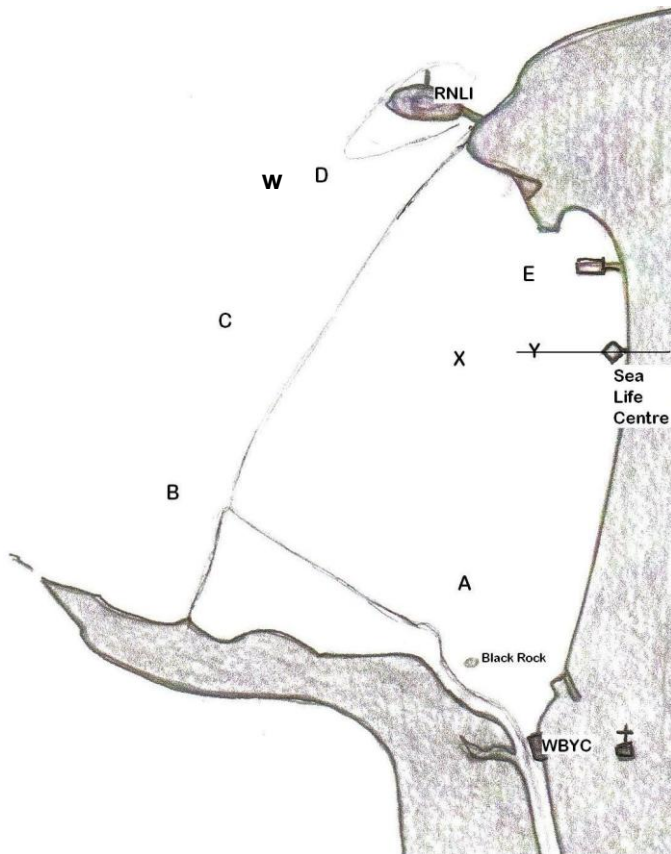
The course chosen by the OOD to suit the wind conditions could be "Start X to port, E to port, A to starboard, B to starboard, Finish X to port, 2 laps for both Class 1 and Class 2. This course would be shown as follows:





BAY RACING MARKS

Key



A – Uphill Boats

B – Safe Water Mark (Juicy)

C – Churchill

Transit Line

D – Milton

E – Dauncey

X – Beachlands

Y - Kim Brown

W – Wave rider

8.2 Channel Courses

- The Start and Finish of all races in these Series will be indicated as specified in **Racing Instructions 5, 6 and 7** above.
- The courses for each Class will be indicated by number boards and will be chosen from the list of "Advised Courses" detailed on page 8.
- Where Class 1 and Class 2 have different courses, this will be indicated by the relevant Class Number Pennant.
- In the list of courses, (P) and (S) mean that the mark should be left to Port or Starboard respectively.

8.3 Reverse Direction Courses

- Exceptionally an A or B series course may be sailed in the reverse direction to that defined in the Table of Advised Courses. In such a case this will be indicated by a board carrying the "First Substitute Pennant" ahead of the course.
- The OOD will make an announcement immediately after the 10 & 5 minute warning calls confirming the variation to the norm.



9 Declarations and Protests

9.1 Declarations of retirement must be notified to the OOD within 2 hours of the finish of the last boat.

9.2 Protests must be delivered to the Race Officer or to the OOD, within 24 hours of the last boat finishing, accompanied by a deposit of £10.

10 Safety Rules and Insurance

- Boats taking part in club racing are required to meet applicable Safety Regulations as per Club Bylaw 6.4. These are given on page 6 of this Sailing Programme.
- All boats must carry third party insurance.

11 Infringements

- If a yacht touches a mark when rounding it, she may exonerate herself by, as soon as possible, sailing clear of all other competing yachts and making a 360° turn, including one tack and one gybe, before reaching the next mark (RRS 31.2).
- If a yacht infringes a Rule in RRS Part 2, "When Boats Meet", she may exonerate herself by, as soon as possible, sailing clear of all other yachts and completing a 720° turn before reaching the next mark of the course. If in the incident she also touched a mark, an additional 360° turn is not required (RRS 44.1 and 44.2). If either of the above penalties result from an infringement at or near the finishing line, the yacht must complete the penalty turns **before finishing**.



12 Scoring

- 12.1 Unless otherwise specified in Sailing Instructions, the Yardsticks used for calculating the results of all events shall be based on the Byron Handicap system as identified in paragraph 17 below.
All events shall be scored in accordance with RRS 90.3 and Appendix A, Low Point System, except that 0.75 will be used for first place.
- 12.2 For a Trophy depending on the results from a 'Series' of races, the number of results to count will be half the number of races held plus 1. In the event of an odd number of races the half shall be rounded down.
- 12.3 A helm carrying out OOD duties, and as a consequence not racing, may claim for that race the average of the points scored for the other races in the Series.

13 Number of Entries

There shall be no minimum number of boats required to make a trophy or series race valid, provided that the course is completed.

14 Additional Instructions

Additional instructions as necessary may be given in writing by the Sailing Committee and shall carry the same authority as these Sailing Instructions. A notice of such instructions shall be placed on the Club Notice Board 14 days before they become effective.

15 Time Limits for Races

The limit on all one-tide races will be 3.5 hours after the start time. The limit on all two-tide races will be 12 hours after the start time.

- (a) The start of any race may be given a two hour start gate as long as it is published.

16 Use of Engines

Engines may be used anywhere up to the 5 minute preparatory announcement and at any time thereafter if, while approaching the start line, the yacht is south of a transit line subtended by the Tropicana. If a yacht uses its engine during a race for emergency purposes, the circumstances are to be logged and reported. Any resulting penalty shall be at the discretion of the Race Committee.

17 Handicap Numbers

All WBYC boats will be given a number based on the Byron system. However, where data for a particular class is not readily available a provisional number will be applied. This number will be valid for all open events and will be the base for Club Races. For Club Races only, each individual boat's number may be adjusted; such variation will be decided by the Sailing Committee before the start of each season and will be based primarily on the results of the previous season. In exceptional circumstances, an additional adjustment may be made during the season. The object of this procedure is to encourage more boats to participate in Club events.

18 Regatta – Special Note

Special rules apply for the Club Regatta. These are supplied to all competitors on payment of the entry fee.

19 Safety Equipment Regulations as per Rule D3 of WBYC

The following items of equipment, or facilities, are required. This is based on RYA document YR9/2003 "Racing Yacht Safety". For this purpose, all WBYC events sailed within Weston Bay and all "B" Series events are deemed to be ISAF Category 5. "A" Series events to be Category 4.

THE FOLLOWING IS A REQUIREMENT FOR ALL EVENTS

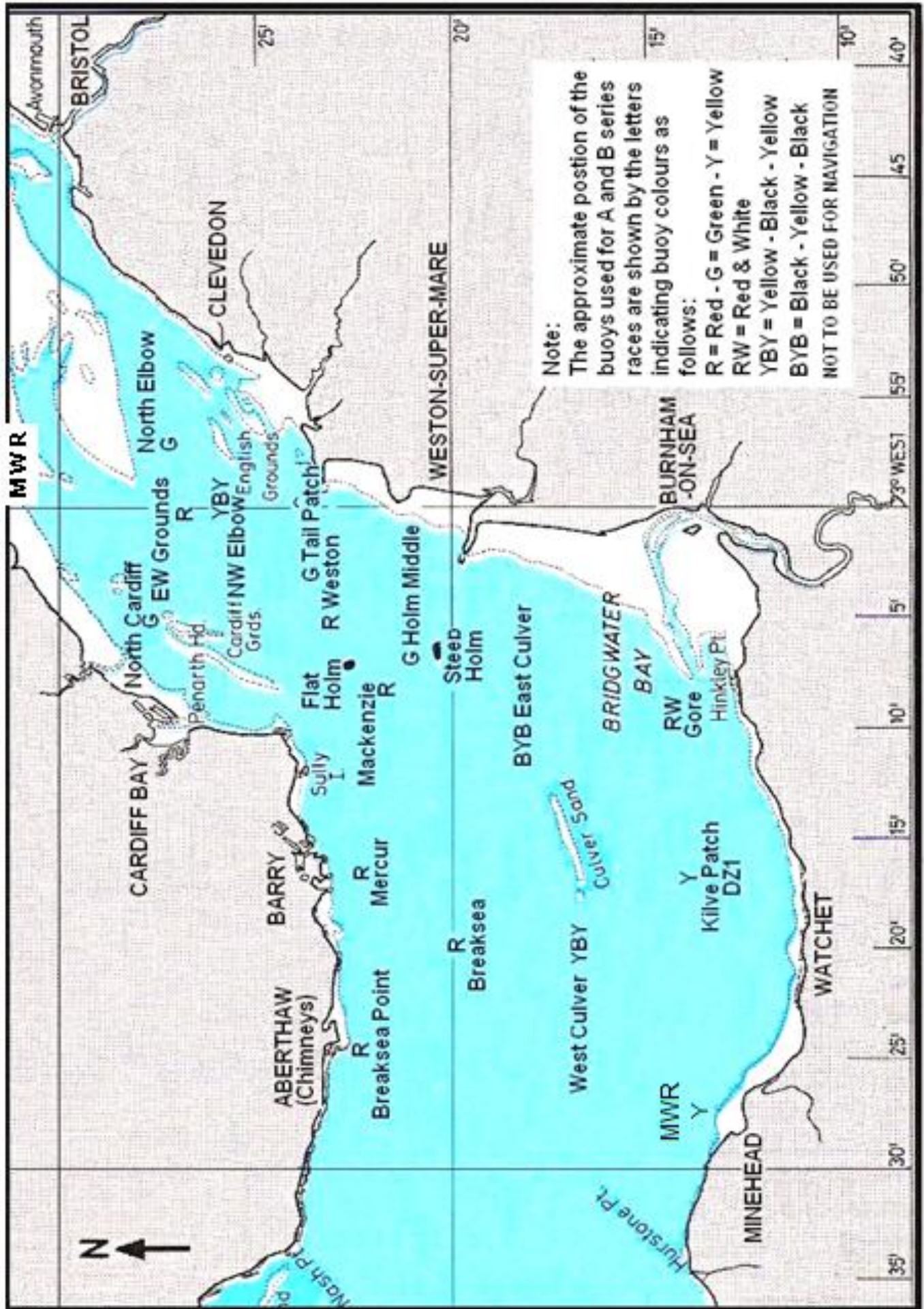
- 1 Manual bilge pump
- 2 Bucket of at least 7 litres capacity on a stout lanyard
- 3 Compass (hand-held is acceptable)
- 4 Fire extinguisher
- 5 Fire blanket
- 6 Lifebuoy with drogue
- 7 Buoyant heaving line, 15m minimum, readily accessible
- 8 Foul weather clothing each crew member.
- 9 Suitable harness clipping on points
- 11 A VHF radio
- 12 Anchor and chain/warp suitable for the size of yacht
- 13 Strong attachment point suitable for anchoring or towing.

Channel Buoy Locations - WGS 84

Avon	51° 27'.90 N	002° 51'.70 W
Newport Deep	51° 29'.36 N	002° 59'.12 W
North Elbow	51° 26'.97 N	002° 58'.65 W
North West Elbow	51° 26'.28 N	002° 59'.96 W
English Welsh Grounds	51° 27'.12 N	002° 59'.99 W
Hope	51° 24'.86 N	003° 02'.68 W
Tail Patch	51° 23'.52 N	003° 03'.60 W
Weston	51° 22'.62 N	003° 05'.75 W
Holm Middle	51° 21'.72 N	003° 06'.72 W
Mackenzie	51° 21'.75 N	003° 08'.24 W
Monkstone	51° 24'.89 N	003° 06'.02 W
North Cardiff	51° 26'.52 N	003° 07'.19 W
Mid Cardiff	51° 25'.60 N	003° 08'.08 W
Cardiff Spit	51° 24'.56 N	003° 07'.12 W
South Cardiff	51° 24'.18 N	003° 08'.57 W
Ranie	51° 24'.23 N	003° 09'.39 W
Wolves	51° 23'.13 N	003° 08'.88 W
Lavernock Spit	51° 23'.02 N	003° 10'.82 W
Merkur	51° 21'.88 N	003° 15'.95 W
North One Fathom	51° 20'.93 N	003° 12'.16 W
Breaksea	51° 19'.88 N	003° 19'.08 W
East Culver	51° 18'.00 N	003° 15'.44 W
West Culver	51° 17'.37 N	003° 18'.68 W
Gore	51° 13'.94 N	003° 09'.79 W
Minehead Wave rider	51° 13'.70 N	003° 28'.30 W
Breaksea Tower	51° 22'.52 N	003° 24'.54 W
Outer Wrach	51° 26'.20 N	003° 09'.40 W
Clevedon	51° 27'.40 N	002° 54'.90 W
Barry Entrance	51° 23'.48 N	003° 15'.42 W
W.S.M Wave Rider	51° 21'.22 N	003° 01'.10 W
Welsh Hook	51° 28'.60 N	002° 51'.90 W
Welsh Water-Barry West	51° 22'.20 N	003° 16'.90 W

These co-ordinates have been checked - but be aware that buoys can move. Check up to date sources.

Advised Courses for 1 and 2 Tide Races





		CLASS 1 & 2 BOATS			
RACE	SERIES	FORCE 4 & ABOVE	FORCE 3 & BELOW		
Channel Race	B	29	29	One tide	
North Elbow	B	23	25	One tide	
Tail Patch	B	26 or 27	28	One tide	
Weston Race	B	18 or 20	22	One tide	
No.	COURSE				
18	Holm Middle (S) - Flatholm (S) - Weston (S)				
20	Hope (P) - Weston (P) - Holm Middle (P)				
22	Weston (P)				
23	Hope (S) - North Elbow (S)				
25	North-West Elbow (P)				
26	North-West Elbow (P) - Tailpatch (P)				
27	Hope (P) - Monkstone (P) - Tailpatch (P)				
28	Tailpatch (P)				
29	English and Welsh grounds (P)				
30	Steeppholm (S) - (Should only use where "out" and "back" reaching winds are forecast)				
31	Steeppholm (P) - (Should only use where "out" and "back" reaching winds are forecast)				
32	Steeppholm (S) - Flatholm (S) - (Should only use where "out" and "back" reaching winds are forecast)				
52	Avon (P) - Welsh Hook (P) - Newport Deep (P) - English Welsh Grounds (S) - N. Cardiff (P) - Outer Wrach (S) - Finish in transit with Penarth Pier				
53	Clevedon (P) - N. Cardiff (P) - Outer Wrach (S) - Finish in transit with Penarth Pier				
54	Gore(S) - West Culver (P) - Minehead Wave Rider (S) - Mercur (S) - Finish in transit with Welsh Water (Barry West)				
55	Gore (S) - West Culver (S) - Mercur (S) - Finish in transit with Welsh Water (Barry West)				
56	Flatholm (P) - North One Fathom (S) - Mercur (P) - Breaksea Tower (P) - Minehead Wave Rider (P) - Gore (P) - Flatholm (S) - Finish Churchill				
57	Flatholm (P) - Mercur (P) - Finish in transit with Welsh Water (Barry West)				
58	Gore (S) - West Culver (P) - Minehead Wave Rider (S) - Breaksea Tower (S) - Welsh Water (Barry West) (P) - Finish in transit with Mercur				
59	Minehead Wave Rider (S) - Breaksea (S) - Finish Churchill				



Club Boat Owner Details

CLASS 1				
BOAT NAME	Type	Byron	Owner	Mooring
TRIVIAL PURSUIT	Corsair F27	798	Don Sutherland	20
JIHAD	Westerly J 24	935	Charles Porter	16
ARCADIA	Vancouver 34	982	Paul Turner	72
RONDO	Sadler 32	1012	Jeff Adams	51
RAGAMUFFIN	GK24	1019	Nathan Williams	52
FLEURIE	Beneteau First 28	1025	Colston Day	40
LASTEN	Shipman 28	1040	Paul Turner	7
DASH II	Hunter Horizon 27	1057	Martin Thomas	9
SEA THRIFT OF RAME	Nicholson 38	1060	Pat Jensen	N/A
BLUE SHADOW	Elizabethan 30	1066	Karl Atkins	14
SEHLOLA	Achilles 24	1078	Rob Strawbridge	64
CELTIC DREAM	Colvic Watson 26	1084	Nick Fisher	47

CLASS 2				
BOAT NAME	Type	Byron	Owner	Mooring
INVISIBLE SUN	Newbridge Eclipse	1100	Jeff Parker	37
SPRAY	Elizabethan 31	1105	Richard Charles	29
CUTTY WREN		1105	Mark Breakey	68
AUDEER	Golden Hind	1119	Terry Millier	1
ISLAND MIST	Westerly Berwick	1127	Bob Godbold	59
REFLECTION	Mirage 28	1128	David Johnson	31
MANDALA	Hunter Duette	1128	John Bailey	26
SEASCAPE	Salty Dog	1135	Ray Munden	28
GEM	Hurley 20	1150	Mark Atkinson	10
DRAGON	Snapdragon 600	1152	Steve Caiger	23
PANDORA	Salty Dog	1155	Les Willis	8
GUNSMOKE	Sadler Frigate 27	1158	Tony Hoskings	6
PAMELA MAY	Alcyome Mk2	1200	Bob Campbell	41
MOONDARRA	Cobra 700	1216	Rory Cope	36
PROGRESS	Leisure 22	1270	Chris Hopcraft	2

Race Organisers / OOD

I.D.	Name	Tel	Email
PJ	Pat Jensen	01934 629019	jensen712@btinternet.com
RC	Rod Clayton	07946 092049	rod@claytonuk.co.uk
BM	Bryan Mitchell	01934 516273	Bryan_Mitchell@btinternet.com
BG	Bob Godbold	01934 621784	regodbold@talktalk.net
PT	Paul Turner	01934 623857	hopandturn@hotmail.com
CP	Charles Porter	01934 620252	charles_porter@btconnect.com
TH	Tony Hoskings	01934 710617	tonyhoskings@btinternet.com



Sailing Programme 2017

As there is no sailing officer this year, we shall organise events via the website, Facebook, and the racing email list.

The relevant resources for this are:

<http://wbyc.co.uk/index.php/91-racing/188-2017-sailing-series>

Facebook: Weston Bay Yacht Club

Facebook group: Weston Bay YC

Email: racing@wbyc.co.uk



Notes



Notes



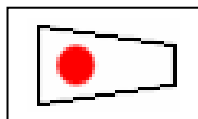
Notes



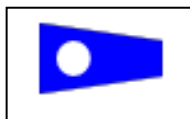
Racing Instructions – Quick Reference Guide to Flags Used

3.1 Where *Class 1 and Class 2* courses differ, the appropriate Number Pennant will be displayed to identify the difference.

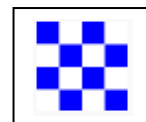
No. 1 - Class 1



No. 2 - Class 2



6.10 A race **cancelled or abandoned** on the day of the event, will be signalled by displaying code flag 'N' (with no other signal) on the Beach Clubhouse, from 45 minutes before the advertised start time until the start time.



8.1 Bay Courses

Course identification and instructions for races held in the confines of Weston Bay. The course chosen by the OOD to suit the wind conditions could be "Start X to port, E to port, A to starboard, B to starboard, Finish X to port, 2 laps for both Class 1 and Class 2. This course would be shown as follows:

CLASS 1 (Pennant)	CLASS 2 (Pennant)	RED X	RED E	GREEN A	GREEN B	RED X	WHITE No.2
							

8.3 Reverse Direction Course

Exceptionally an A or B series course may be sailed in the **reverse direction**indicated by a board carrying the "First Substitute Pennant" ahead of the course number boards.

